



Enterprise Reporting Solution

Argos 6.3 Release Guide

Product version 6.3

Last updated 8/29/2019

Trademark, Publishing Statement, and Copyright Notice

© 1998-2019 Evisions, Inc. All rights reserved.

This software and related documentation are provided under a license agreement containing restrictions on use and disclosure and are protected by intellectual property laws. No part of this document may be reproduced, stored in or introduced into a retrieval system, or transmitted in any form or by any means (electronic, mechanical, photocopying, recording, or otherwise), or for any purpose, without the express written permission of Evisions, Inc.

The information contained herein is subject to change without notice and is not warranted to be error-free. Product features referenced herein for a period of time may not match product contents. Evisions, Inc. does not warrant that the functions contained in the software will meet your requirements or that the operation of the software will be uninterrupted or error free. Evisions, Inc. reserves the right to make changes and/or improvements in the software without notice at any time.

This software and documentation may provide access to or information on content, products, and services from third parties. Evisions, Inc. and its affiliates are not responsible for and expressly disclaim all warranties of any kind with respect to third-party content, products, and services. Evisions, Inc. and its affiliates will not be responsible for any loss, costs, or damages incurred due to your access to or use of third-party content, products, or services. Evisions, Inc. does not endorse the content or developer of any products or web sites mentioned.

All information in this guide is designed for instructional purposes only. Evisions, Inc. makes no guarantees regarding the accuracy or performance of any techniques used in this guide. Software configurations and environments may vary, and some techniques used in this guide may not operate efficiently under all configurations. This guide may contain examples of various technologies or products, which are the sole property and responsibility of their creators.

Trademarks are the property of the respective owners for any products mentioned herein.

Table of Contents

- What's New in Argos 6.3? 4**
 - MAPS and Argos Updates 4
 - Product versions 4
 - Installation 4
 - 1. Prepare test environment and ensure current backup 4
 - 2. Check for updates 4
 - 3. Allow update process to complete 5
 - 4. Verify the latest version is installed 5
- Argos 6.3 Release Notes 6**
- Getting Help 9**

What's New in Argos 6.3?

Evisions is pleased to announce the release of Argos version 6.3, which includes the following changes:

Enhancements:

- Added user-configurable options for handling a scheduled query that returns no results.
- Increased the window size for editing SQL variables.
- Added highlighting in free-type queries to indicate closed or missing end points.
- Improved readability of crosstab property names.
- Added Copy File task information to the ScheduleTaskProperty table in the Data Warehouse.
- Added support for Windows Server 2019.
- Additional enhancements and resolved issues.

We appreciate the feedback received from all of our users. Our products would not be what they are today without your continued support. If you have any comments or suggestions, please do not hesitate to [open a HelpDesk ticket](#) and let us know.

MAPS and Argos Updates

Some of the changes in this release require an update to MAPS as well as to Argos. We recommend upgrading both products to the latest versions concurrently.

Product versions

The latest versions of MAPS and Argos included in this release are:

- Argos mapplet 6.3.0.1869 / Argos client 6.3.0.2251 / Web Viewer 6.3.0.103
- MAPS service 6.3.0.2152 / MAPS Config 6.3.0.1151 / eLauncher 6.3.0.33

Installation

1. Prepare test environment and ensure current backup

We highly recommend installing updates in a test environment before applying them to your production environment. You should make sure that a current backup is available in case of any unforeseen issues. To create a full backup of your MAPS environment, go to the **Server** ->

Backups screen in MAPS and click **Backup Now**.

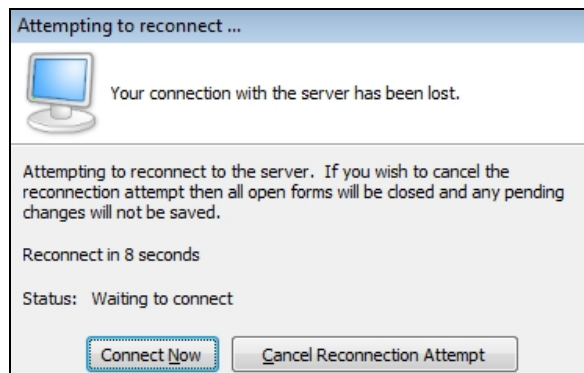
2. Check for updates

Click the **Check for Updates** button in the MAPS Config application to view available updates.

It is possible to apply updates when users are on the system; however, to avoid the possibility of losing unsaved work we recommend applying updates during off hours.

3. Allow update process to complete

When applying updates to the MAPS service you will be temporarily disconnected from the server:



The update process may take a few minutes to complete. **Do NOT cancel the reconnection attempt or manually restart the server.** You will automatically be reconnected to the server once the update has been applied.

4. Verify the latest version is installed

To ensure that you are on the most current version, continue clicking the **Check for Updates** button and applying the updates until no new updates are available.

Please Provide Us with Your Feedback!

As always, we welcome any [feedback or suggestions](#) you may have. We very much appreciate your thoughts and suggestions, so please keep the great ideas coming!

Argos 6.3 Release Notes

Argos Mapplet 6.3.0.1869 / Argos Client 6.3.0.2251 / Web Viewer 6.3.0.103
MAPS Service 6.3.0.2152 / MAPS Config 6.3.0.1151 / eLauncher 6.3.0.33

Argos

Enhancements

Area	Description	Issue number
Crosstab reports	Property names for crosstab report objects have been updated to improve readability.	AR-5972
Crosstab reports	The Crosstab Report Editor now automatically positions a page footer band away from other bands or objects.	AR-5983
Crosstab reports	In the Crosstab Report Editor, crosstab objects are now much easier to select using the mouse.	AR-6021
Crosstab reports	The Crosstab Report Editor now supports custom colors, as well as more intuitive color selection.	AR-6044
Data Warehouse	Copy File task information has been added to the ScheduleTaskProperty table in the Data Warehouse.	AR-3909
OLAP	In the Dimension Editor, it was difficult to edit or rename a Hierarchy Group because the mouse could not select the name easily. A new context menu (right click to display) provides a Rename option, as well as other options.	AR-6046
Queries	When testing a DataBlock, setting the maximum number of rows to return for the report query to 0 would automatically reset the value to 1. You can now use 0 to return all records.	AR-1806
Queries	The SQL editor for Argos now highlights parentheses, brackets, and braces so that you can easily search for missing punctuation.	AR-3312
Scheduling	When configuring the task to execute a report, you now have new options for what to do if no records are returned from the query: create a blank report, don't create a report, or trigger a failure.	AR-2282
User interface	When editing a SQL variable, the default window size is now larger and easier to use.	AR-5519
Web Viewer	The tab order within the Argos Web Viewer has been improved with respect to selection of child objects and multiple objects within scroll boxes.	AR-5877

Resolved Issues

Area	Description	Issue number
CSV reports	Some fields were not being included in CSV reports. This happened when the query was created in the visual designer, and a field did not have an alias. If the report query was switched to free type SQL, the non-aliased fields were removed from the report.	AR-6018
Clustered installations	In a clustered MAPS environment, test schedules were appearing and disappearing in the Explorer tree as the schedule was running. This no longer occurs.	AR-5533
Crosstab reports	When a PDF was created from a crosstab report, the title of the PDF document defaulted to "Argos Report." Now, the report name is used for the document title so that it can be displayed in the heading of the PDF window.	AR-6025
Dashboards	When creating a radio button object on a DataBlock form, the "<" character (less than symbol) was not displaying properly in the rendered Dashboard in the Argos client. The symbol now displays as expected.	AR-3392
Forms	When a user changed the position of a dashboard form that was configured with a specific height and width, the new position was not being retained and used when the dashboard was relaunched.	AR-5911
Library of Objects	When copying or importing an item into the Library of Objects, the options to retain the original author and dates did not work.	AR-3569
OLAP	When the Dimension Editor window lost focus (which could happen when a user clicked another area of the screen) the Dimension Editor closed, without saving the changes that had been made. Now the Dimension Editor window will reappear as expected once the user changes focus back.	AR-5559
Scheduling	When copying or importing a schedule, the option to retain the original author did not work.	AR-3798
Scheduling	Schedules that used the FTP task were logging an error message and triggering the "on error" email notification if the FTP filename contained the word "Error".	AR-5873

Enhancements

Area	Description	Issue number
Authentication	Added support for SAML 2.0 authentication to MAPS.	MAPS-1003
Authentication	Added a button for single sign-on from the eLauncher for institutions who use SAML authentication. Once the SAML server is configured properly, eLauncher users can use the Single Sign-On button to log in to the AWW, Argos, and FormFusion.	MAPS-2216
Authentication	The Argos Web Viewer now supports single sign-on and authentication through SAML servers.	MAPS-2281
Configuration	Added a new Single Sign-on entry in the MAPS Config Navigation pane which is used to configure both CAS and SAML authentication. The previous CAS entry has been removed and functionality replaced by this new Single Sign-On entry.	MAPS-2224
Groups	Added support for MAPS Groups with CAS SSO.	MAPS-2273
Security	Updated the OpenSSL .dll files packaged with MAPS to version 1.0.2r.	MAPS-1923
Security	Updated the OpenSSL .dll files packaged with MAPS Config to version 1.0.2r.	MAPS-2249
Server	Added Windows Server 2019 to the list of supported operating systems.	MAPS-2164
User interface	Updated the title bar to say "MAPS Config" instead of "MAP Server Configuration".	MAPS-2046

Resolved Issues

Area	Description	Issue Number
Clustered installations	The sorting of the boot date time for nodes in a cluster has been corrected.	MAPS-2107
Data connections	An error occurred when MAPS created a string variable of the default type WideString, but the database did not support the WideString variable type. To resolve this, MAPS Config now provides an option in the Data Connections configuration settings for SQL Formats. You can set the default string type to Auto, Narrow, or Wide to accommodate the database requirements.	MAPS-2359
Data dictionary	When an administrator used MAPS Config to delete an Argos-created Field Join, an Access Violation error could occur. The condition has been fixed.	MAPS-1402
Log files	The log creation dates/times shown on the Logging -> Logs screen were showing the GMT time instead of the local time.	MAPS-2166
Log files	The Created Date column for log files is now always displayed by default.	MAPS-2170
Product updater	When checking for updates, the link to the Product Version Matrix was not going to the correct page.	MAPS-2293
Stability	The error "Unable to add auditing records. Microsoft MSXML is not installed" was appearing in the internal logs. The underlying cause of the error has been fixed.	MAPS-1756

Getting Help

For information on using the software, please refer to the in-product Help, which contains detailed information on all aspects of the product.

If you are having problems with the installation or configuration, you can search our [support site](#), which includes a knowledge base of common issues. If you are unable to find the solution, submit a HelpDesk request with a detailed explanation of the problem you are experiencing.

Please do not hesitate to contact the Evisions HelpDesk if any questions or problems arise. We are here to help you and want to ensure your success.

If you find that areas of this documentation could benefit from additional detail or clarification, please let us know. We are constantly trying to improve the installation process to make it as easy as possible.